

How to Attach the Positioning Stickers

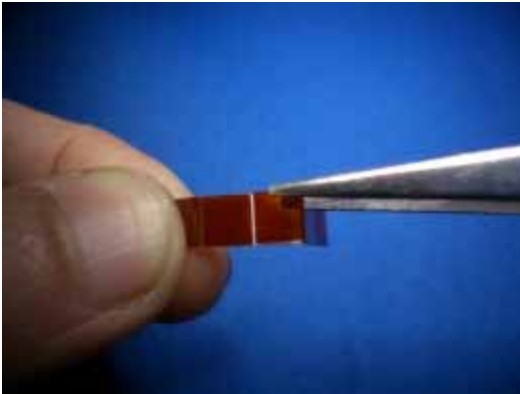
The positioning stickers are used to help align the TQPACK or NQPACK with the foot pattern on the user board. Follow the instructions below to attach the stickers.

The positioning stickers are already cut into five pieces which you can peel off and use as needed.

* Includes one spare piece.



[1] Peel off a sticker.

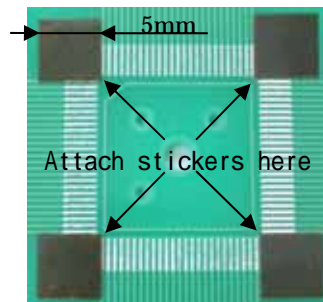
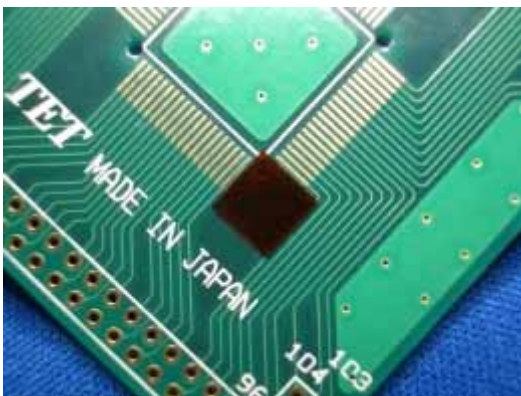


[2] Align each sticker with a corner of the foot pattern on the user board and attach.



[3] When attaching, take care to align the stickers accurately with the foot pattern lines at each corner.

It is sufficient just to align with two diagonals if there is not enough space on the circuit board.



[4] Attach stickers at each of the four corners.

