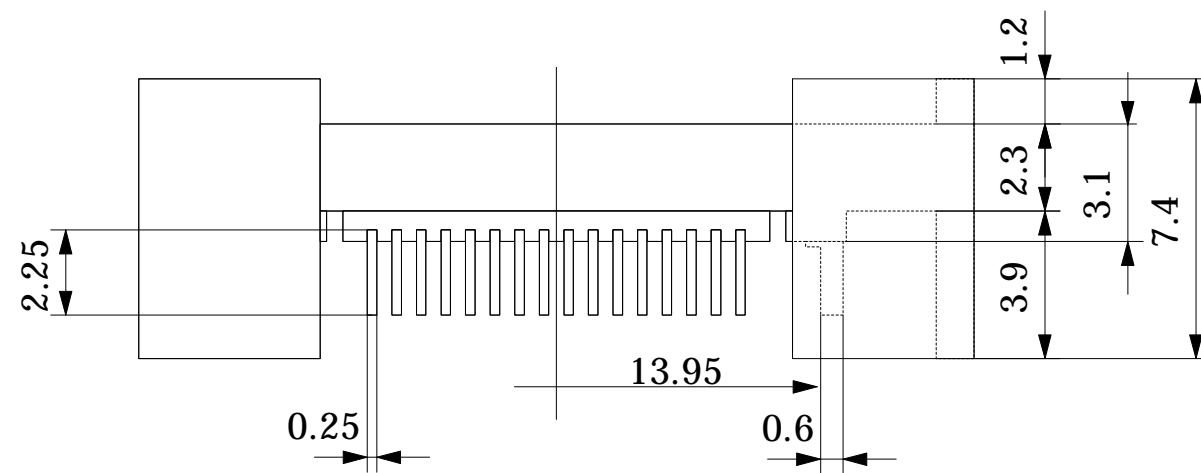


* Applicable size of IC package : IC body size 12.0 x 12.0 mm
IC outer size 14.8 x 14.8 mm



Part No.	HQPACK064SB	
IC package	Square	
Pin count	64Pin	
Lead pitch	0.65mm	
Unit : mm	Design : M.H	
TET TOKYO ELETECH CORP.		